

PE

(Polyethylene)



DESCRIPTION

Particularly soft and elastic but with excellent resistance to chemicals and wear, **PE monofilament** is used for the production of fruit and vegetable washing brushes or car wash brushes.

It is made in cross and round sections depending on the application.

PE is available in a range of diameters from 0.35 mm to 0.85 mm.

PE monofilament is not hygroscopic.

Supplied in non-flaggable or two-sided flaggable version, upon request also with **certifications of suitability for contact with food.**

WHERE TO USE

- Brushes for washing and waxing fruit and vegetables
- Brushes for industrial use
- Car wash brushes

COLOURS

PE is available in black or the classic colours from our range.

SAFETY INSTRUCTIONS FOR PREPARATION AND APPLICATION

PE is an article and referring to the current European regulations (Reg. 1906/2007/CE - REACH) does not require the preparation of the Safety Data Sheet.

During use, it is recommended to wear gloves and goggles and follow the safety requirements of the workplace.

PRODUCT FOR PROFESSIONAL USE.

TECHNICAL DATA (typical values)

PRODUCT IDENTITY

Composition:

low-density polyethylene (LDPE), PE-based master batches

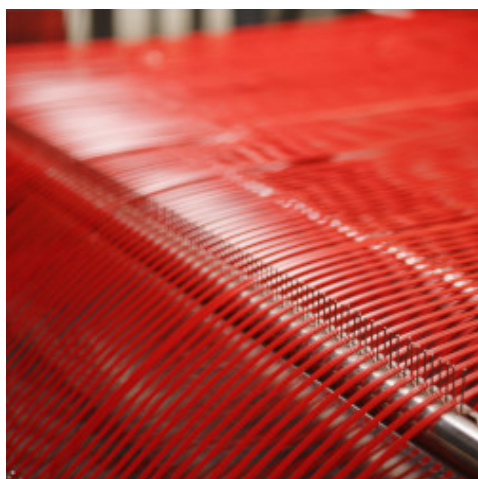
Consistency:

monofilaments

FILI&FORME



Length:	all lengths available up to a maximum of 1200 mm maximum tolerance foreseen ± 2 mm - for cut only 1200 mm ± 5 mm tolerance
Use:	brushes for washing and waxing fruit and vegetables industrial brushes car wash brushes
Colours:	black or various colours to choose from the catalogue
Density:	0.92 - 0.94 g/cm ³
Maximum operating temperature:	+80°C
Water absorption:	< 0.5%
Combustibility:	flammable
Abrasion strength:	poor
UV strength:	poor
Chemical resistance:	stable when in contact with mild and strong acids (e.g. hydrofluoric acid), good resistance to mild and strong alkalis and inorganic salts. Good resistance to paraffinic hydrocarbons, resistant to halogens, oxidised compounds, aromatic compounds, mineral oils, fuels and vegetable fats. Excellent resistance to alcohols, ethers, esters and amines
Mechanical details:	poor resistance to abrasion



WARNING

Although the technical details and recommendations contained in this product data sheet correspond to the best of our knowledge and experience, all the above information must, in every case, be taken as merely indicative and subject to confirmation after long-term practical application; for this reason, anyone who intends to use the product must ensure beforehand that it is suitable for the envisaged application.

Please refer to the current version of the technical data sheet, available from our website www.mapei.com

LEGAL NOTICE

The contents of this Technical Data Sheet ("TDS") may be copied into another project-related document, but the resulting document shall not supplement or replace requirements per the TDS in force at the time of the MAPEI product installation.

The most up-to-date TDS can be downloaded from our website www.mapei.com. ANY ALTERATION TO THE WORDING OR REQUIREMENTS CONTAINED OR DERIVED FROM THIS TDS EXCLUDES THE RESPONSIBILITY OF MAPEI.

Mapei S.p.A.

Via Cafiero, 22, 20158, Milano

 +39-02-376731

 www.mapei.com

 mapei@mapei.it

60611-6-2024 en (IT)

Any reproduction of texts, photos and illustrations published here is prohibited and subject to prosecution

FILI&FORME
